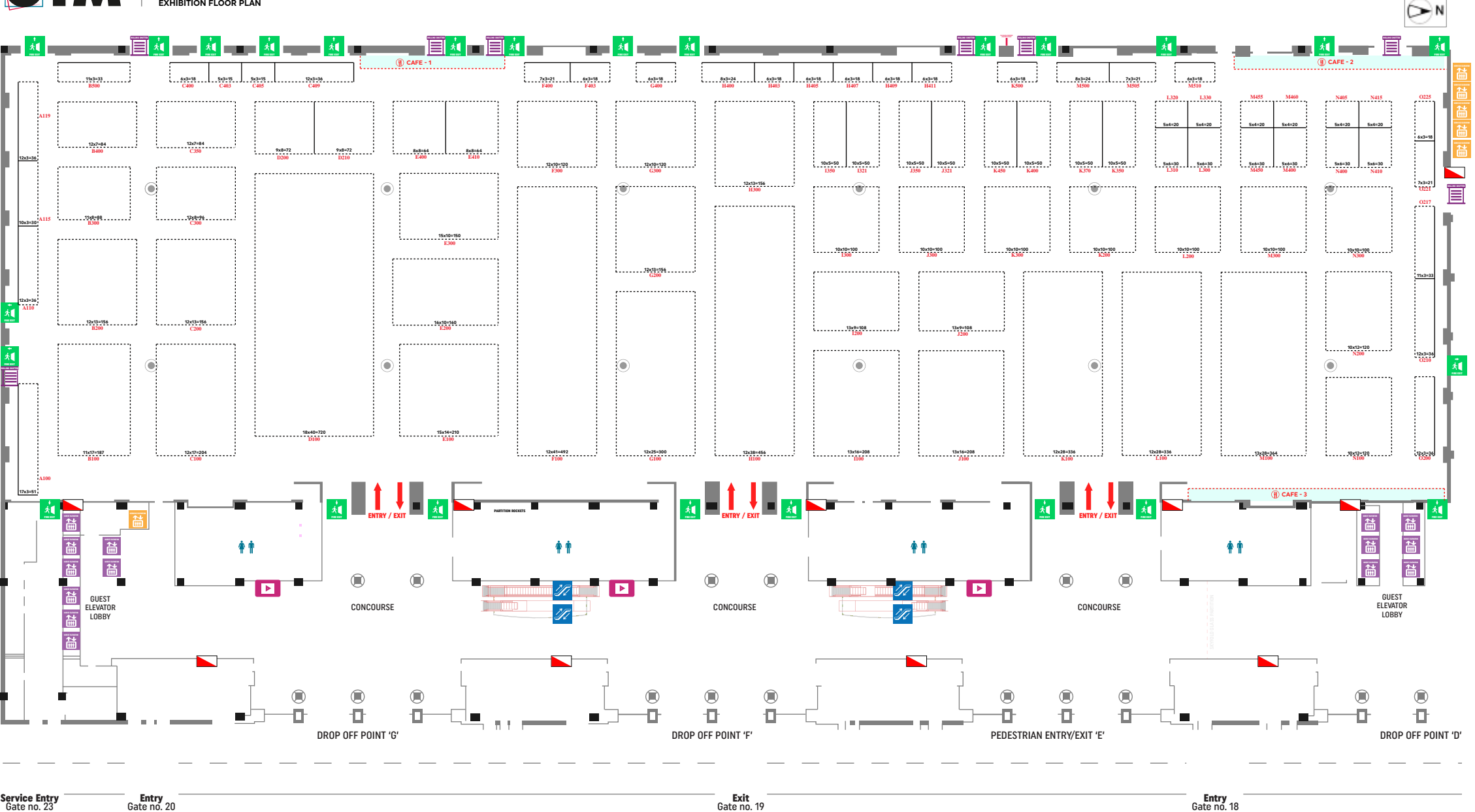
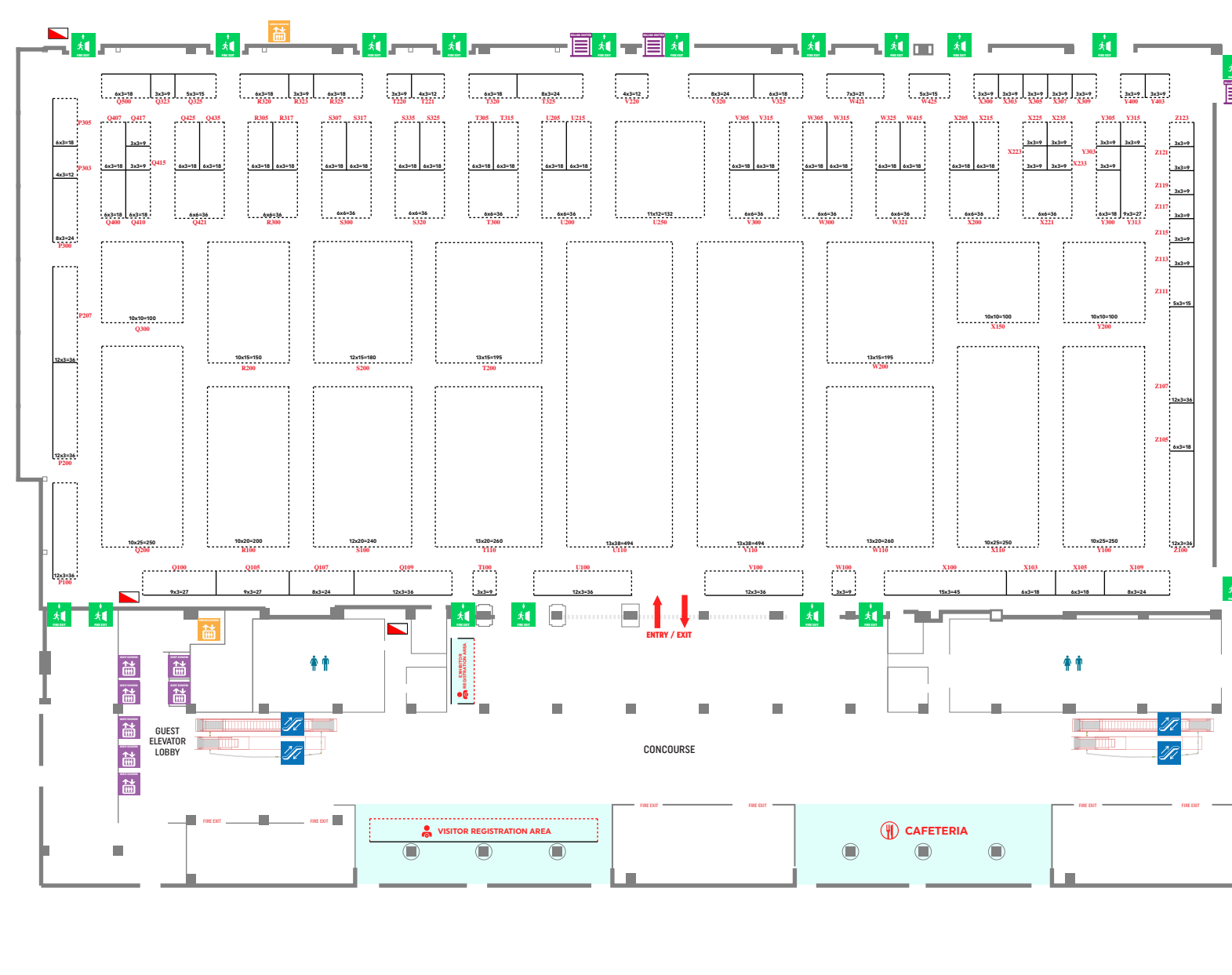


**PAVILION HALL (GROUND FLOOR)**



**JASMINE HALL (3rd FLOOR)**



Service Entry Gate no. 23      Entry Gate no. 20      Exit Gate no. 19      Entry Gate no. 18

**ICON INDEX**

- Pillar, Tree Column Diagram ((1.1m (w) x 12.4m (h))
- ⊗ Hanging Points (500kgs)
- Floor Utility boxes

**TREE COLUMN DIAGRAM**

For Pavilion: (AV, IT, Power, Water, Supply, Drain, Compressed Air)  
 For Jasmine: (AV, IT & Power)

**Important note for Pavilion & Jasmine hall: Bare space minimum 18 sqm & above.**

\* Fairfest Media Limited reserves right to amend the exhibition floor plan & is not responsible for any change due to unforeseen circumstances.